

# Valve **TQC** Company



- \* Forged Ball Valve
- \* GGC Valve
- \* Water Glass Casting
- \* Precision Casting

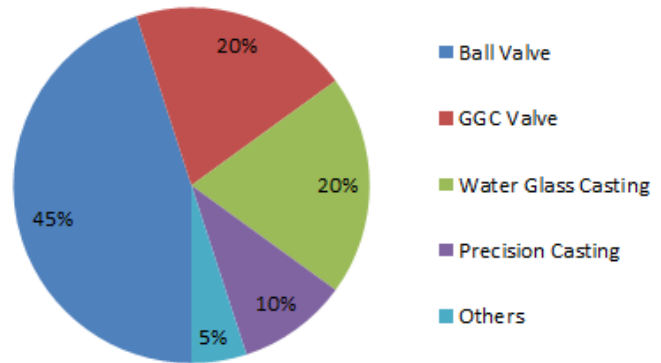
**“Be the Highest of Standards”**



## “Be the Highest of Standards”

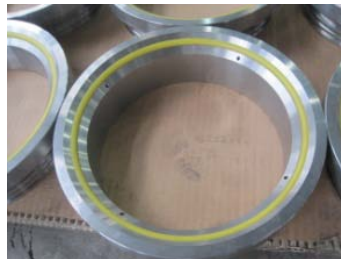
McSYS is one of the leading importers & exporters of valve parts in Korea. Our main products consist of forged ball valve part, forged GGC valve part, water glass casting part & precision casting with the total capacity of more than 10,000 metric tons per year. McSYS owns a professional QC team, from raw material to finished part, to inspect strictly according to the completed QA process.

With the experience of more than 20 years in processing valve products, our staff members, which are mostly specialists in the industry, are committed to providing the products with outstanding quality and competitive price that can meet the growing demand of our customers.



Product ratio

## Main Products

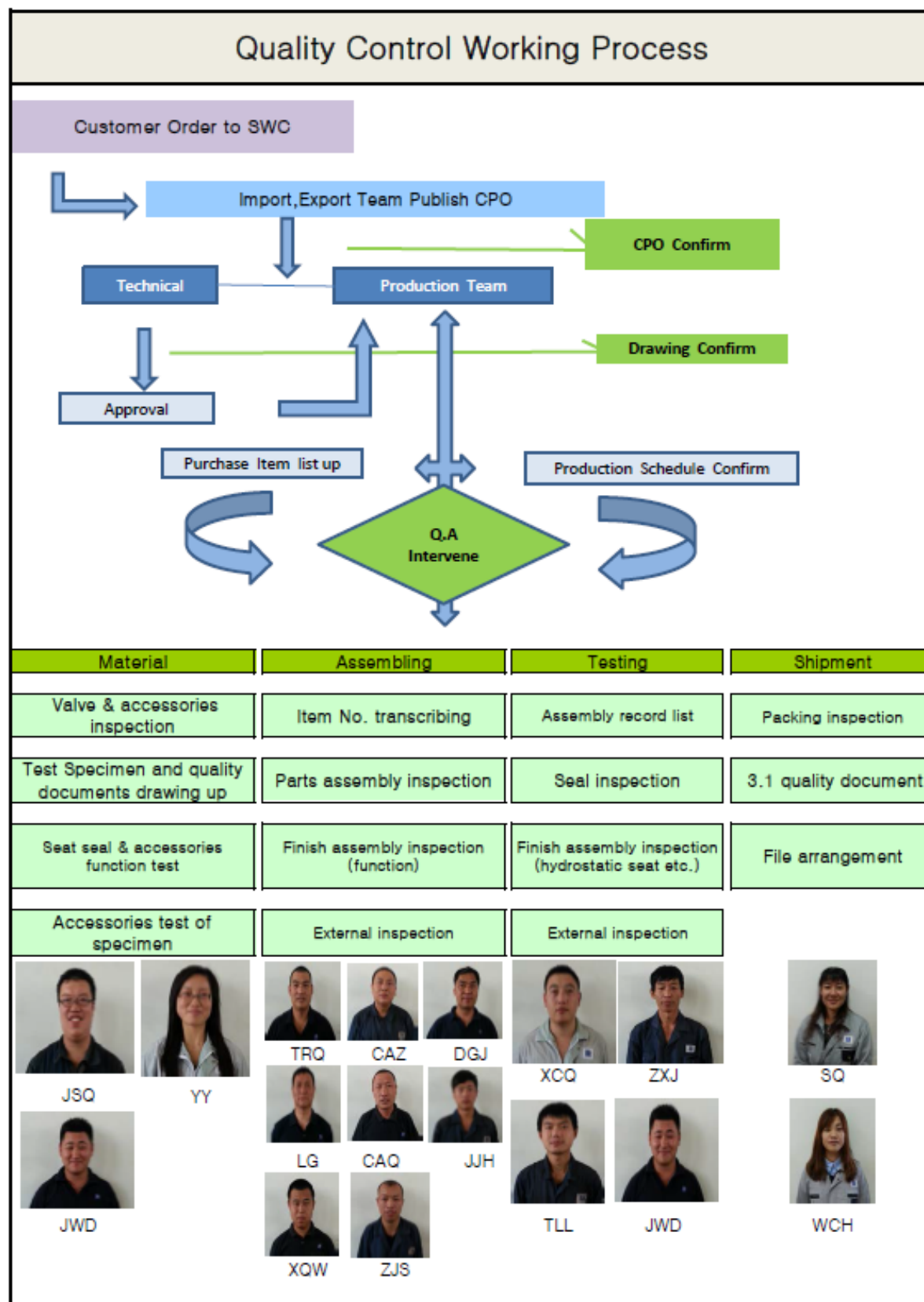




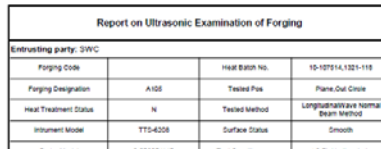
As an organization, McSYS is committed to growing with our clients and understand that our success is a directly related to the quality of our products.


The quality control process we follow is systematic and completely documented. Our commitment is to deliver to our clients nothing but the highest grade products. Our quality control process is a crucial resource in realizing this goal.





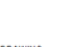




3.1	Roasting machinery	APPROVED DWG.	M	100%	Instrument Model	TT5-43
3.2	Mechanical properties of the mat	AISTM A370	M	100%	Probe Model	2.8P200
3.3	Heatstable test on polypropylen	AISTM A370, Max 901/1	M	100%	Test Block Model	Big Flameless
3.4	Low temperature impact properties	AISTM A370	M	100%	Coupling Method	Direct Contact
3.5	UV degradation on polypropylen	AISTM A388 Lex 2	M	100%	Gain Adjustment	Depth Meter
3.6	Visual and dimension check of finished phone	APPROVED DWG.	M	100%	Test Standard	EN12523
4	packaging design	BWC STP EXPORT PACKING	M	100%	Forging Size	2" 450 BODY
5	Check of final Documents	CUSTOMERS PO	M	100%	2" 450 CAM	TR-26F53-5657



		<h2 style="text-align: center;">PART DIMENSION INSPECTION REPORT</h2>									
Supplier: SVC Product: SVC Customer:		Part Name: 2 915 06 GAP Inspection No: 118 9092 100105 Inspection Rate: 5%									
NO	DWG. DIMENSION	TOLERANCE		Serial No	Serial No	Serial No	Serial No	Serial No	Serial No	YES/NO	
		LOWER	UPPER	1	2	3	4	5	6		
1	0220			219.66	220.03						
2	044			45.82	46.26						
3	0103			103.17	103.1						
4	037			66.63	67						

5	0302	91	 <b>PARTS C</b>	
6	0123.9	123		
7	0220	220	<b>CUSTOMER</b>	<b>PARTS NAME</b>
8	44.2	44.2		
9	52.4	52.4	<b>PO NO.</b>	<b>HANDLING</b>
10	39	39		
11	17.6	17.6		
12	150.2	150		
13	100.3	106		
14	26.5	26.1		
15	22.4	22.1		
16				
17				
18				

 <p style="text-align: center; font-weight: bold;">DRAWING</p>		<p> <input type="checkbox"/> A-ADOPT  <input checked="" type="checkbox"/> B-REJECT         </p>																										
<p>Note</p> <p>REJECT CRIME AS REJECTION VALUE WITHIN OR NOT CONTRARY TO</p>		<table style="width: 100%; border-collapse: collapse;"> <tr> <th style="width: 10%;">NO.</th> <th style="width: 40%;">INSPECTION</th> <th style="width: 10%;">DATE</th> <th style="width: 10%;">BY</th> <th style="width: 10%;">REMARKS</th> </tr> <tr> <td>1</td> <td>INSPECTION (CRIME IS REJECTED ONE)</td> <td></td> <td></td> <td></td> </tr> <tr> <td>2</td> <td>PAINTING</td> <td></td> <td></td> <td></td> </tr> <tr> <td>3</td> <td>UTICAL</td> <td></td> <td></td> <td></td> </tr> <tr> <td>4</td> <td>CONSTRUCTION</td> <td></td> <td></td> <td></td> </tr> </table>		NO.	INSPECTION	DATE	BY	REMARKS	1	INSPECTION (CRIME IS REJECTED ONE)				2	PAINTING				3	UTICAL				4	CONSTRUCTION			
NO.	INSPECTION	DATE	BY	REMARKS																								
1	INSPECTION (CRIME IS REJECTED ONE)																											
2	PAINTING																											
3	UTICAL																											
4	CONSTRUCTION																											

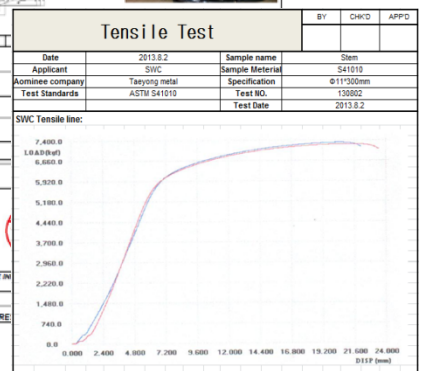
[illegible]

22	30		202	182	
		167	A/E (EAC)		
<b>Mechanical Properties</b> (Incompressible and isotropic)					
%	%	HB			

[illegible]

CERTIFICATION		CERTIFICATION NO. JC1034110			
CPO NO.	QMS NO.	ORDER QTY (UNIT)	INSPECTION QTY (UNIT)	QUALIFIED QTY (UNIT)	
13	QW13C12W42	20200000000000000000	1140	1140	1140

1000



Applicant Company	Area m <sup>2</sup>	Reduction %	T-Siren [2m/yr]	Max Load N	Y-Siren [2m/yr]	Y Load N	Max Disp mm	Ecological %	Hardware [dB]
SBC	87.540		834.167	7319.0			22.12	20.11	
	87.340		831.08	7209.4			22.47	21.34	233
SBC's Supplier		69	789		550			21	241
Standard Data		≥55	≥540		≥345			≥22	≥151

---



SWC

Automation

QUALITY CONTROL REPORT

CERTIFICATE NO.  
MTR150721

MATERIAL		HEAT NO.	CHEMICAL ANALYSIS												MECHANICAL PROPERTIES							
			C	Si	Mn	P	S	Cr	Ni	Mo	Cu	V	Nb	CE	TENSILE MPa	YIELD MPa	% ELONGATION	% REDUCED AREA	HARDNESS HB	Impact J		
1	A150N	1321-118	0.18	0.2	0.02	0.017	0.002	0.077	0.039	0.004	0.028	0.001	0.002	465	274	38	60	153-156	27	20		
2	A150N	15-107814	0.19	0.23	0.9	0.009	0.003	0.04	0.032	0.007	0.004	0.001	0.001	460	310	33	63	161-194	85	58		
3																						
4																						
5																						
6																						
Requirements		Min. Max.	0.150 0.230	0.600 1.300	0.035 0.035	0.025 0.025	0.300 0.300	0.400 0.400	0.120 0.120	0.400 0.400	0.050 0.050	0.020 0.020		485 655	250 350	22 30	30 40	157 167	20J AIC	16J EAC		

MATERIAL		HEAT NO.	CHEMICAL ANALYSIS												MECHANICAL PROPERTIES					
			C	Si	Mn	P	S	Cr	Ni	Mo	Cu	V	Nb	N	TENSILE MPa	YIELD MPa	% ELONGATION	% REDUCED AREA	HARDNESS HB	
1																				
Requirements		Min. Max.																		

HEAT TREATMENT STATUS (IF APPLICABLE)

ASTM A150N: Normalizing at 900 °C, maintain 1 hours, cool in air

HEAT NO.		15-107814										1321-118									
		SIZE	NAME	QTY	SIZE	NAME	QTY	SIZE	NAME	QTY	SIZE	NAME	QTY	SIZE	NAME	QTY	SIZE	NAME	QTY		
Parts list	600-2"	BODY	5	800-4"	BODY	24	150-118"	BODY	32	800-6"	CAP	12	2800-2"	SH	8						
	600-2"	CAP	5	800-4"	CAP	48	150-118"	BODY	54	800-6"	SH	12	2800-4"	BODY	2						
	600-2"	SH	15	800-4"	SH	48				800-6"	CAP	12	2800-4"	CAP	4						
	600-4"	BODY	5	800-6"	BODY	18				800-6"	SH	12	2800-4"	SH	4						
	600-4"	CAP	5	800-6"	CAP	32				1500-2"	BODY	68	563-118"	BODY	18						
	600-10"	CAP	6	800-6"	SH	20				1500-2"	CAP	56	563-118"	BODY	18						
	600-10"	SH	6	1500-3"	BODY	18				1500-2"	SH	112	563-118"	BODY	36						
	600-3"	BODY	36	1500-3"	CAP	18				1500-4"	BODY	12									
	600-3"	CAP	36	1500-3"	SH	32				1500-4"	CAP	24									
	600-3"	SH	36	1500-3"	BODY	32				1500-4"	BODY	32									

Size: 1/2"-56"

Pressure: CLASS 150#-2500#

Material: A105 LF2 F6a F304 F304L F316 F316L etc.



Cap



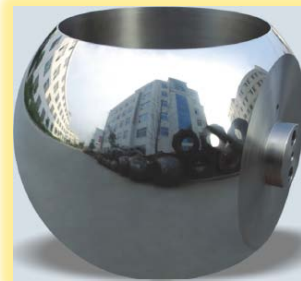
Body



Seat



Stem



Ball

Ball: Floating Ball, Trunnion Ball, Three-way Ball, Stem Ball

Size: 1/2"~56"

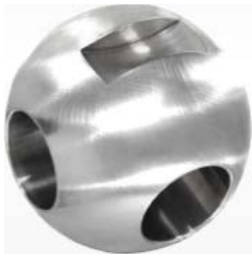
Pressure Rating: Class 150#~2500#

Base Material: A105, LF2, F6a, F304, F304L, F316, F316L

Coatings: ENP, Chrome, Plating, Tungsten, Catbide, Chrome, Stellite, Inconel, Carbide, Special

Support Type: Seat, Stem, Support Plate, Axle Sleeve

Drive: Curved Slot, Rectangle Socket, Straight Slot, Pin Hole, Key Hole, Hexagon Hole



RAW MATERIAL



PO NO.:	BK111272 Spc. NO. 18
Description:	Ball valve ball 50" 5715 F14452 014 - IPC
Shipping Marks:	

ROUGH PART



MACHINING



ASSEMBLING



The operators were trained in Italy.



## TEST



MT(Magnetic Particle Inspection)

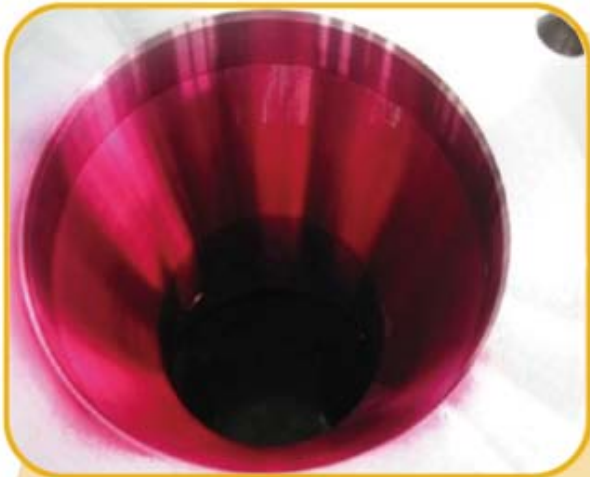
According to API 598 Test

UT(Ultrasonic Examination)



Test

PT(Dye Penetrant Inspection)



## Test



Material: A105, F6a cl2 , F304 ,F316, etc.



Body



Handwheel



Sleeve Nut



Stem



Nut

## Stem

Material: A105, F6a cl2 , F304 ,F316, etc.



Raw material & Rough



Gate Valve Stem



Ball Valve Stem

Butterfly Valve Stem

Globe Valve Stem

Material: A395, A126, CL.A, A216 Gr.WCB etc.



## Precision Casting

Material: WCB ,CF8, CF8M ,CF3 ,CF3M etc.



## Water Glass Casting

Material: WCB ,CF8 ,CF8M ,CF3 ,CF3M etc.





